

TECHNICAL DATA SHEET

ALLOY WIRE

MATERIALS

Chemical composition in % in compliance with Standard EN12166										
	Elements	Cu	Fe	Mn	Ni	P	Pb	Sn	Zn	Other
CuSn5 (CW451K)	Min.					0,01		4,5		
	Max.	rest	0,1		0,2	0,4	0,02	5,5	0,2	0,2
CuZn36 (CW507L)	Min.	63,5								
	Max.	65,5	0,05		0,3	-	0,05	0,1	rest	0,1
CuNi18Zn20 (CW409J)	Min.	60,0			17,0					
	Max.	63,0	0,3	0,5	19,0	-	0,3	0,3	rest	0,2
Cu-DHP (CW024A)	Min.	99,9	-			0,015				
	Max.	-	-			0,040				

WIRE DIMENSIONS in mm

From diameter 1,20 to 0,10
with tolerance : -/+ 0,01

MECHANICAL PROPERTIES – Material condition

Soft
¼ hard
½ hard
hard

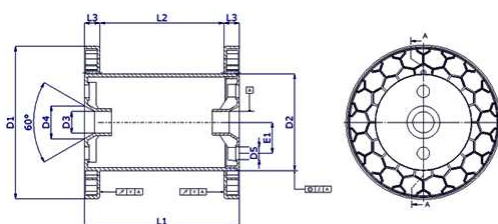
→ Should you need different tensile strengths or bigger diameters, do not hesitate to contact us .

SURFACE

Bright
Copper, brass and bronze wire in diameters from 0,30 to 1,00 mm are available also in the tin-plated version
(Hot tin-plating assuring a tin coating thickness of 2 ÷ 4 micron)

PACKAGING

Wire can be wound also on spools DIN in compliance with standard DIN46399

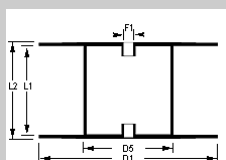


DIN	D1	D2	D3	D4	D5	L1	L2	Weight gr.	Load-capacity	Packaging
100	100	63	16	24	7	100	80	125	±1	18 spools each box
160	160	100	22	34	13	160	128	350	±7	105 spools each pallet
200	200	125	22	34	13	200	160	600	±12	72 spools each pallet

Soft wires are also available in coils weight of 20 kg. with internal diameter of 28 cm



Hard wires can be wound on plastic spool:



Type	D1 mm	D5 mm	F1 mm	L1 mm	L2 mm	Load Capacity
BS80-27 with plastic flanges and steel core	355	230	127	310	350	80 kg.