

TECHNICAL DATA SHEET NATURAL ANNEALED LOW CARBON STEEL

MATERIAL

Low carbon Steel : C% max 0,08

DIMENSIONS in mm

N. 08	DIAM 0,55	N. 22	DIAM 0,28
N. 10	DIAM 0,52	N. 24	DIAM 0,24
N. 12	DIAM 0,48	N. 26	DIAM 0,22
N. 14	DIAM 0,44	N. 28	DIAM 0,20
N. 16	DIAM 0,40	N. 30	DIAM 0,18
N. 18	DIAM 0,36	N. 32	DIAM 0,16
N. 20	DIAM 0,32	N. 34	DIAM 0,14

Diameter tolerance : -/+ 0,01

MECHANICAL PROPERTIES

Tensile strength
N/mm² ≤ 450 N/mm²

SURFACE

Bright

PACKAGING

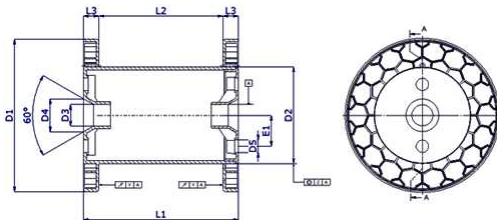
Coil with internal diameter max 28 cm



Wood spools of 100 gr.
Each box contains 10 spools for totally 1 kg.



Wire can be wound also on spools DIN in compliance with standard DIN46399:



DIN	D1	D2	D3	D4	D5	L1	L2	Weight gr.	Load Capacity	Packaging
100	100	63	16	24	7	100	80	125	±1	18 spools each box
160	160	100	22	34	13	160	128	350	±7	105 spools each pallet
200	200	125	22	34	13	200	160	600	±12	72 spools each pallet