

TECHNICAL DATA SHEET

LOW CARBON STEEL Suitable for production of metallic mesh

MATERIALS

Low carbon Steel : C% max 0,08

MECHANICAL PROPERTIES – WIRE DIMENSIONS in mm AND SURFACE

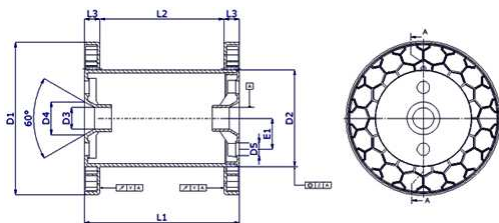
Diameter range	Tensile strength	Surface
From 0,22 to 0,80	880 - 980 N/mm ²	galvanized
0,20-0,24-0,30-0,45	350 - 500 N/mm ²	galvanized
From 0,16 to 1,00	≤ 450 N/mm ²	bright

Diameter tolerance : -/+ 0,01

PACKAGING

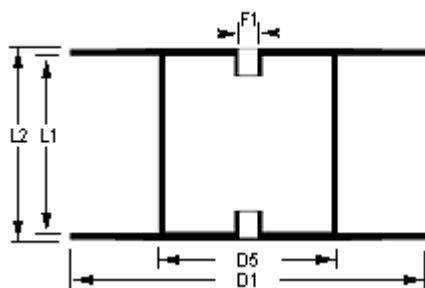
Typ of wire	DIN100	DIN160	DIN200	BB20	DIN8559	MP100 ferro
Hard galvanized		X	X	X	X	
White annealed	X	X	X	X		X

- Wire can be wound on spools DIN in compliance with standard DIN46399:



DIN	D1	D2	D3	D4	D5	L1	L2	Weight gr.	Load Capacity	Packaging
100	100	63	16	24	7	100	80	125	±1	18 spools each box
160	160	100	22	34	13	160	128	350	±7	105 spools each pallet
200	200	125	22	34	13	200	160	600	±12	72 spools each pallet

And spools:



Tipo	D1 mm	D5 mm	F1 mm	L1 mm	L2 mm	Load-Capacity
BB20	202	110	32,5	160	180	± 16 kg.
DIN8559	355	224	36	160	200	± 40 kg.
MP100 steel	355	224	127	315	355	± 80 kg.